

Shadoxhurst Recreation Ground Modernisation Project



Shadoxhurst Parish Council

Protecting the Woodland Gateway to the Countryside

What do we have now?

Shadoxhurst Recreation Ground is a mixed sports facility sited on Hornash Lane

It consists of

1. A pavilion, built in the 1970s which offers a meeting space, a small kitchen and two toilets
2. A children's playground
3. A basketball court with hard surfacing
4. An outdoor adult gym facility
5. Two football pitches



Why are we proceeding with the modernisation project?

Shadoxhurst Parish Council (SPC) carried out a survey in 2021 which highlighted that while the facilities within the recreation ground are used by villagers, there was a desire to see upgraded facilities and respondents indicated that they would be more likely to use the facilities available (or increase the frequency of use) if the facilities were improved.

Comments received related to the age and physical state of the existing facilities and also a desire to see facilities catering to a wider user age range.

What is the modernisation project?

Phase	Description	Timeline
1	Playground	In progress - expected completion by June 2022
2	Pavilion Building	Planning Application Q2 2022 / Build - TBC
3	Outdoor Gym Equipment	TBC
4	MUGA	TBC



We Need You!!

How can you help deliver this project for Shadoxhurst Residents?

- 1) Do you have any experience in writing grant or funding applications?
- 2) Do you have a skill that would be useful in either the design or construction?
- 3) Do you want to get involved with the project on a project management basis?

Get in touch with Emma Yeomans at Shadoxhurst Parish Council
(emma.shadoxhurstpc@gmail.com)

Phase 1: The Children's Play Area

What do we have?

Several pieces of play equipment installed in different phases.

Why are we changing it?

The equipment is ageing, appeals to a limited age range, it spread out and is often too muddy to use. The area also has issues with dog fouling.

What are we doing?

- 1) A new climbing frame designed for ages 4-12 on weatherproof surface
- 2) A new basket swing on a weatherproof surface
- 3) Two new picnic benches for the park area
- 4) Relocating the small slide to a weatherproof surface
- 5) Removing some older / less used pieces of equipment to create a more organised park area
- 6) Enclose the play area with fencing to avoid dog fouling

When are we changing it?

The equipment has been ordered and work is due to commence at the start of May with completion by the end of May.



Phase 2: The Pavilion

What do we have?

A pavilion, built in the 1970s which offers a meeting space, a small kitchen and two toilets with an adjoining garage for storage

Why are we changing it?

The existing building is in a poor state of repair and is reaching the end of its usable life. The facilities offered are not accessible and the building has limited storage for users of the pavilion building and the recreation field.

What are we doing?

We are proposing to replace the existing building with a new modern building to meet the demands of the village today and in the future.

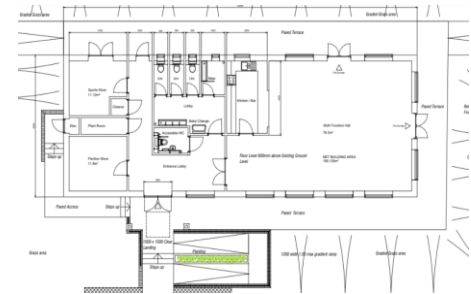
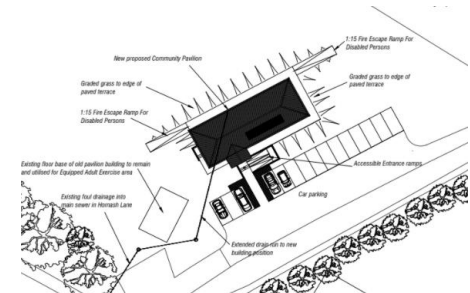
The new building will offer a meeting space, kitchen facility, expanded toilet facilities including a dedicated disabled toilet as well as expanded storage.

The building will be centered on the field to bring it closer to the play facilities and expand the potential users of the hall.

When are we changing it?

Planning application due to be submitted in April 2022

Build date - TBC depending on funding - CAN YOU HELP US?



Proposed Front Elevation East

Phase 3: Outdoor Exercise Equipment

What do we have?

Several items of outdoor gym equipment, installed on a rubber mulch base in 2018.

Why are we changing it?

The surfacing has suffered from settling and poor drainage and has worn away / bubbled from the ground.
The position of the equipment is in the way of the football pitches

What are we doing?

Relocate the gym equipment to new safety surfacing, using the foundations of the current pavilion building as a base.

When are we changing it?

TBC - after the demolition of the current pavilion building



Phase 4: Basketball court / Multi-Use Games Area

What do we have?

A half basketball court with a goal post.

Why are we changing it?

The surfacing is damaged with multiple cracks and the goal post is tired and rusting.
The area appears to be used sparingly.

What are we doing?

Replacing with a multi-use games area with safety surfacing to allow 5-a-side football, tennis, basketball

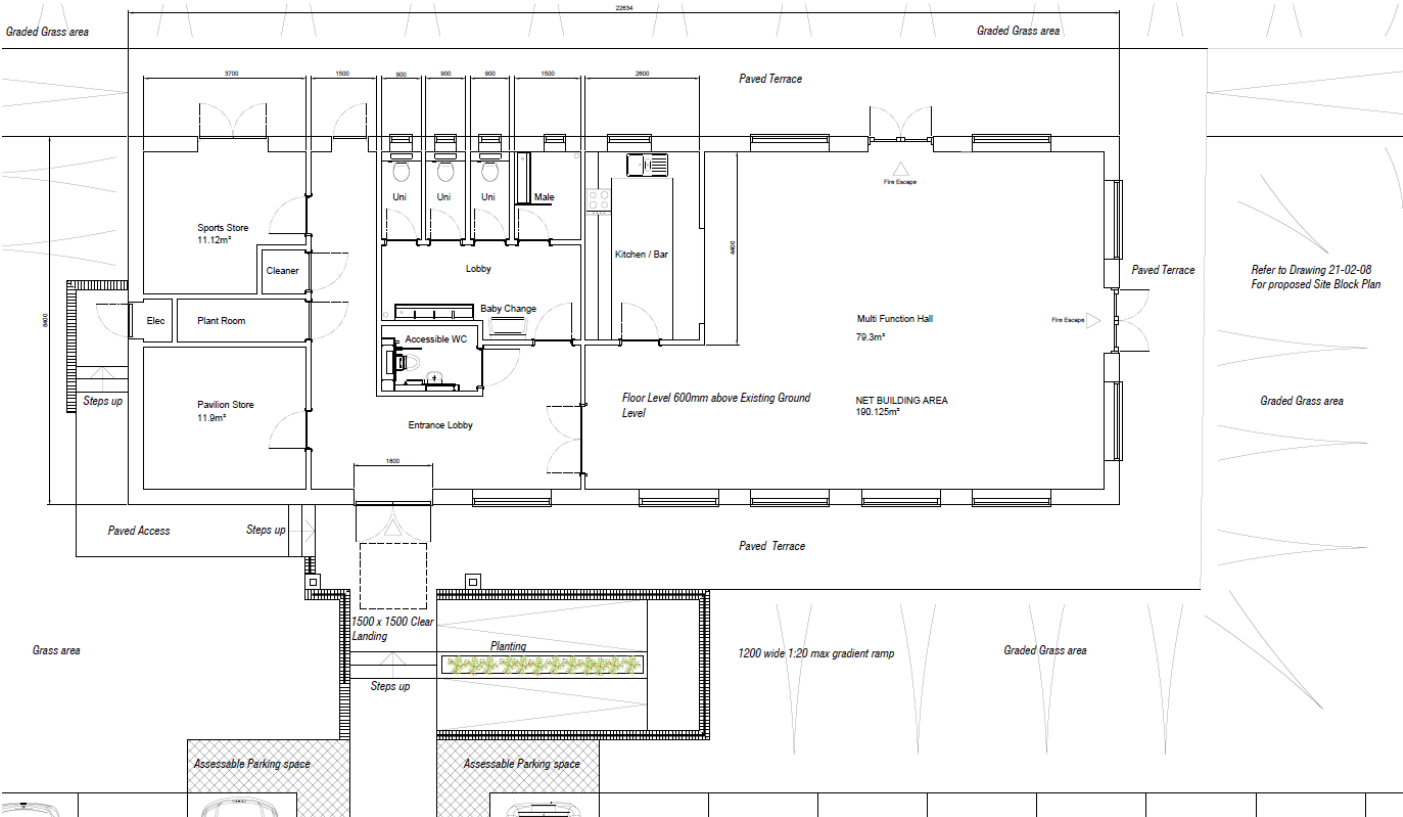
When are we changing it?

TBC - after the relocation of the outdoor exercise equipment



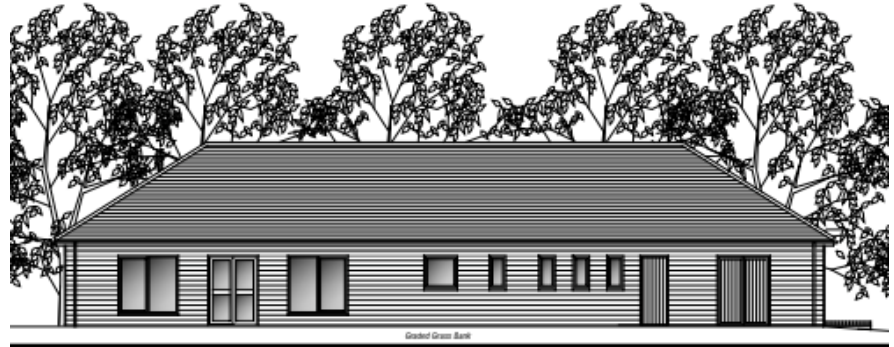


Annex: Pavilion Plans - Proposed Floorplan





Annex: Pavilion Plans - Proposed Elevations



Proposed Rear Elevation West



Annex: Pavilion Plans - Proposed Site Plan

Recreation Ground

